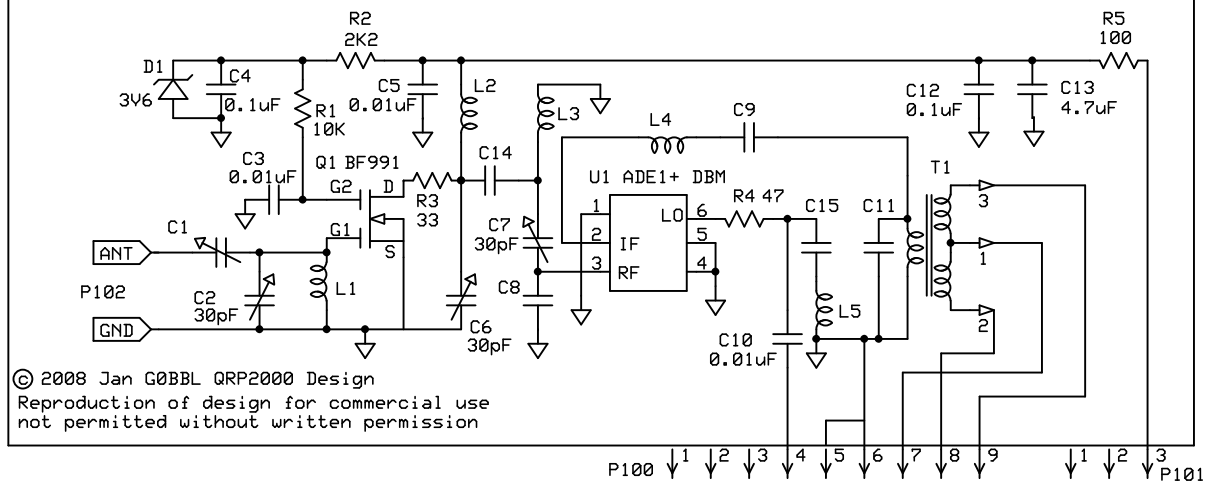


## VHF-UHF Dual Conversion SDR Receiver with single Local Oscillator (Si570 Synthesizer)



### 50-54 MHz 6M Band Coverage Option

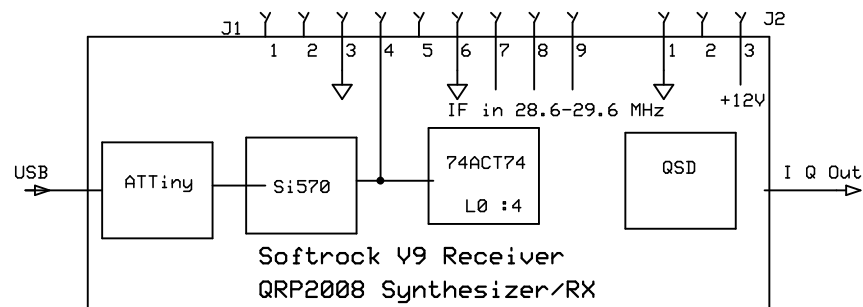
L1, L2, L3 = 0.35uH 11t #26 AWG on T25-6 Yellow  
L4 = 17t #30 AWG on T25-6 Yellow Core  
T1 = T25-6 (yellow core) Primary 14T #30 AWG  
Secondary 2x7T bifiliar #30 AWG

C1 = 30pF Trimmer Capacitor  
C8 = 150pF  
C9 = 180pF  
C11 = 220pF  
C14 = 2.7pF  
C15 and L5 Not used

### 144-148 MHz 2m Band Coverage Option

L1 = 0.080uH 6t #26 AWG on T25-12 Green Core  
L2, L3 = 0.060uH 5t #26 AWG on T25-12 Green Core  
L4 = 14t #30 AWG on T25-6 Yellow Core  
T1 = T25-6 (yellow core) Primary 7T #30 AWG  
Secondary 2x4T bifiliar #30 AWG

C1 = 10pF Trimmer Capacitor  
C8 = 100pF  
C9 = 82pF  
C11 = 270pF  
C14 = 1.2pF C8 = 100pF  
C15 and L5 Not used



50 - 54 MHz Band Tuning (:3) IF = 16.6 MHz- 18 MHz  
70 - 74 MHz Band Tuning (:3) IF = 23.333 - 24.667 MHz  
135 - 138 MHz Band Tuning (:5) IF = 27.0 MHz - 27.6 MHz  
144 - 148 MHz Band Tuning (:5) IF = 28.8 MHz - 29.6 MHz

QRP2000 DESIGN TEAM © 2008 QRP2000 Design

Softrock 6m/2m Converter for V9.0 RX

Jan G0BBL (QRP2000)  
Tony KB9YIG (PCB)

V1.7  
7/20/2009

Page 1 of 1